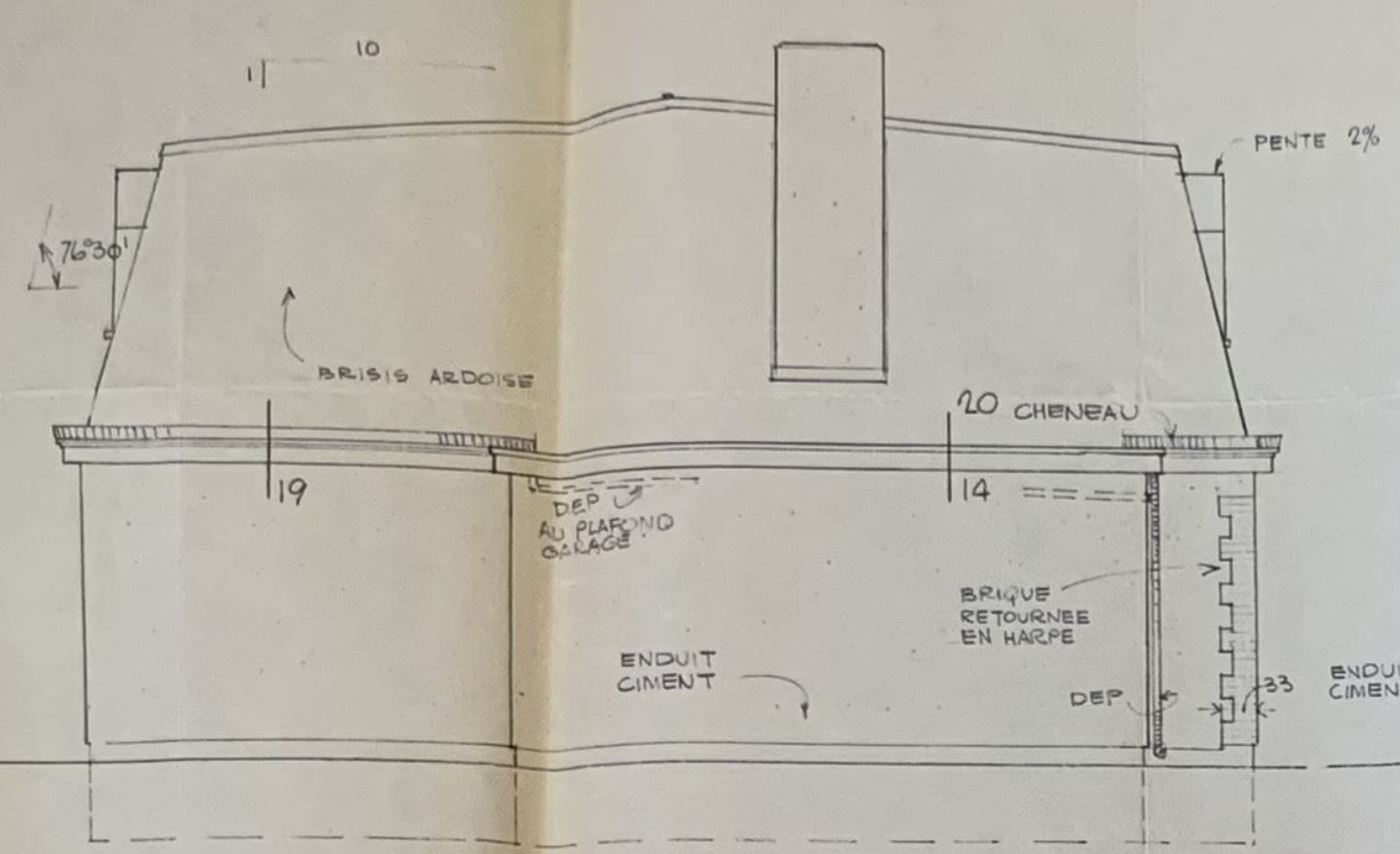
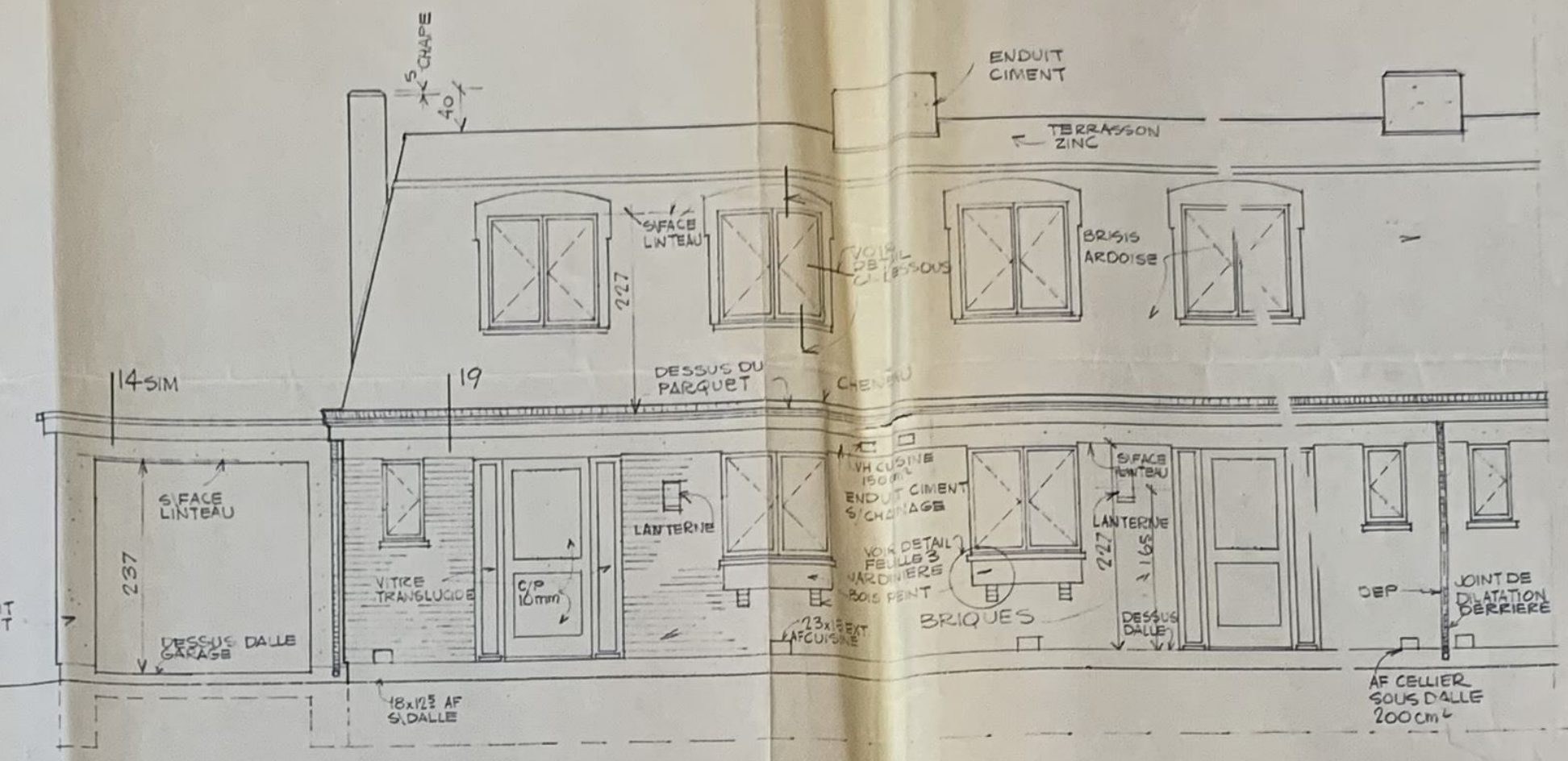


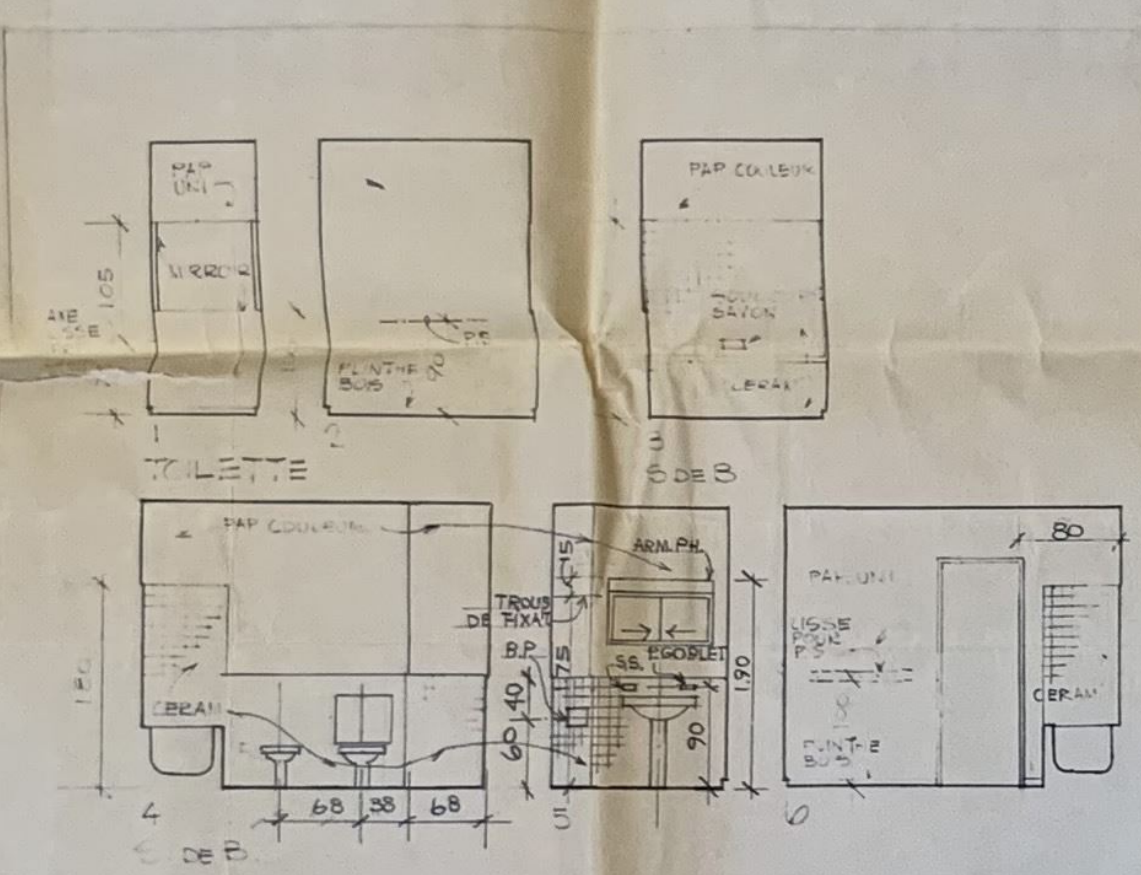
500
500
4 JUN 1966
4 JUN 1966



FAÇADE LATÉRALE TYPE
2cm = 1m

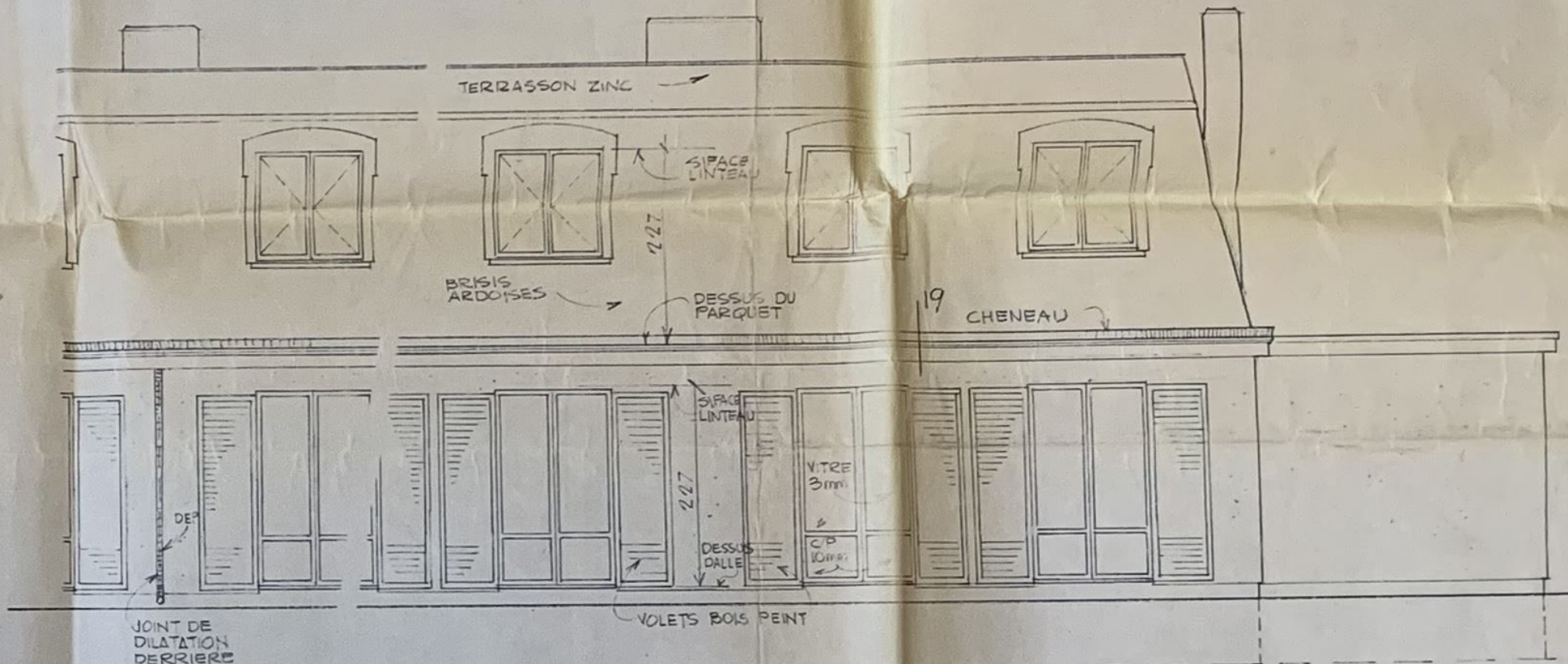


FAÇADE PRINCIPALE
2cm = 1m

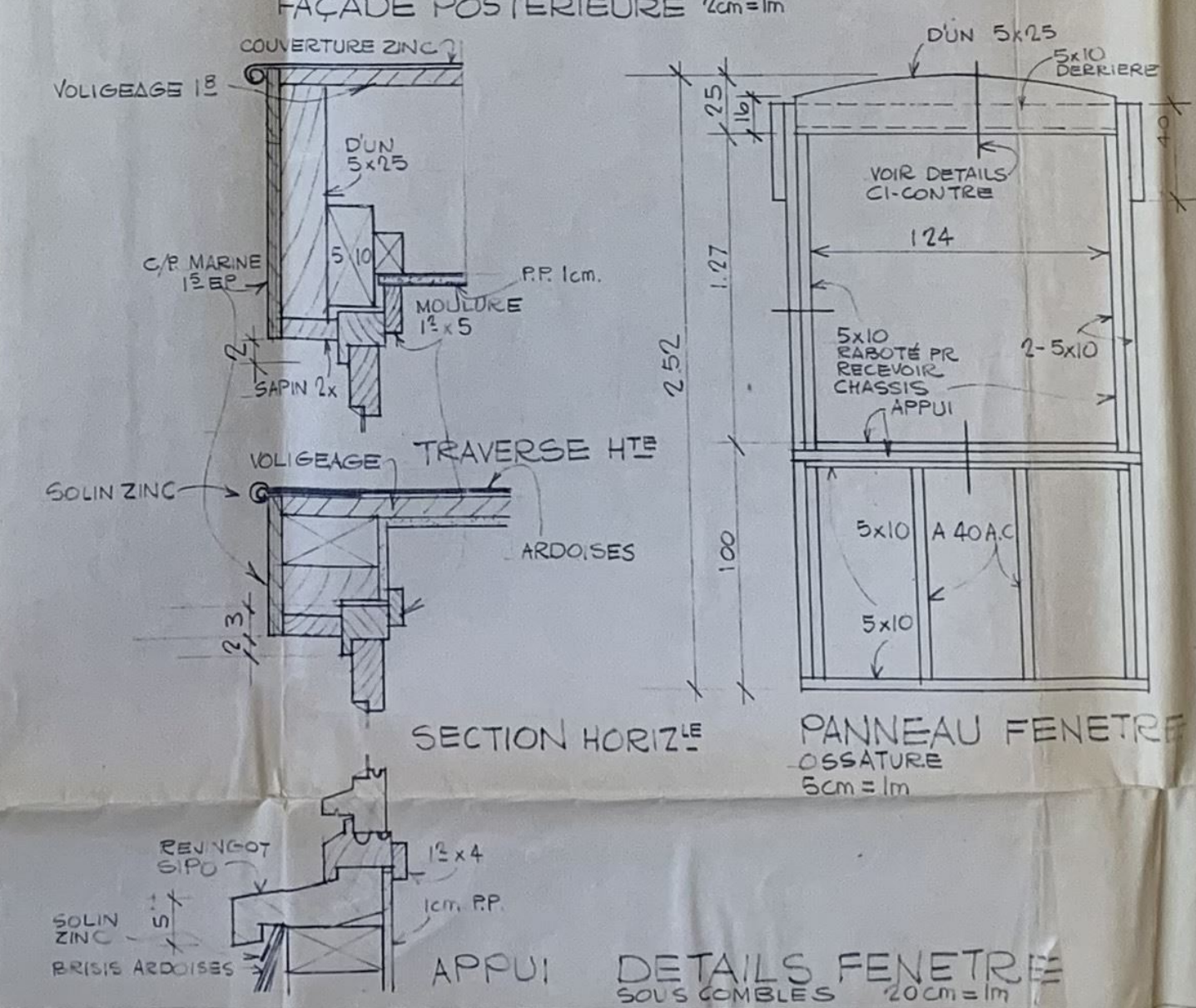


NOTE:
LES MOSES POUR
LA ARRE DU POUTE
SERVENTES SONT
A POSER ENTRE LES
PAREDS DES CLOISONS POUTE

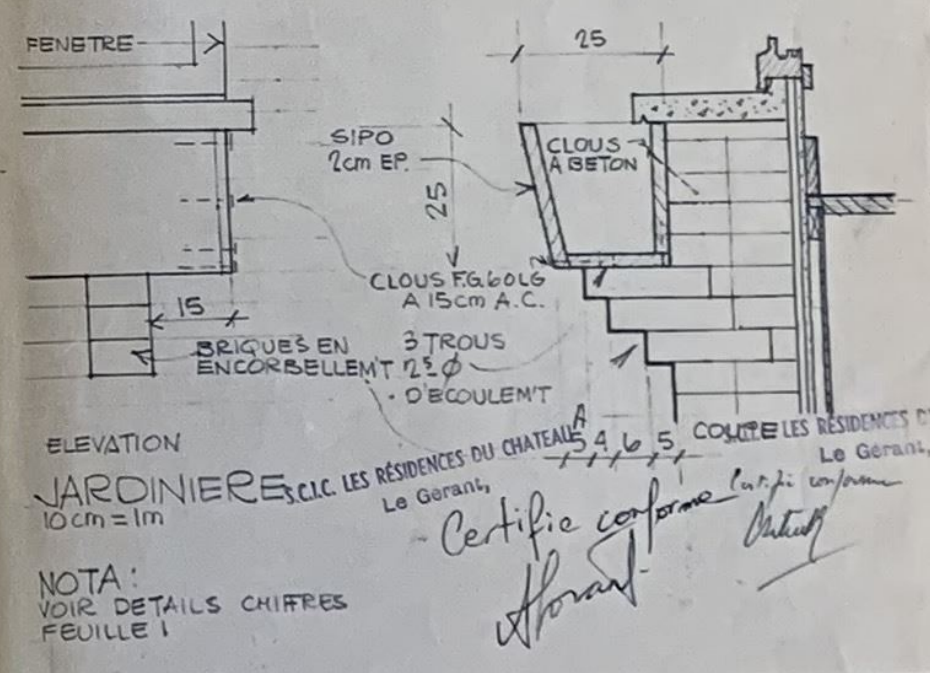
ELEVATIONS INTERIEURES
2cm = 1m



FAÇADE POSTÉRIEURE
2cm = 1m



SECTION HORIZONALE
PANNEAU FENETRE
OSSATURE
5cm = 1m



ELEVATION
JARDINIÈRE
10cm = 1m

ANNEXE NO. 7

REVISE LE 29 OCT 65
FAÇADES EXTER., DETAILS, PLOMBERIE, CHAUFFAGE, ELEV INT

| | | | | |
|-----------|-------|--------|---------|---------------------------|
| DATE | REF. | DESSIN | FEUILLE | LES RESIDENCES DU CHATEAU |
| 15 JUN 65 | PI-65 | NIHANT | 3 DE 4 | LE MESNIL SAINT DENIS |

MAISON TYPE D
D1
LE MESNIL SAINT DENIS 940

Levill & Sons
BLAUBOURG ST HONORE
PARIS 8

Certific conforme aux plans
Hovant